

Project Rositz 20203 – Remediation „Neue Sorge“

- Phase 1: Refilling
- Phase 2: Sealing/Covering
- Rehabilitation in the nature and landscape

C&E · Consulting und
Engineering GmbH



D-09117 Chemnitz • Jagdschänkenstraße 52
Tel.: +49 (0) 371 881 4228 • Fax: +49 (0) 371 881 4311
E-mail: info@cue-chemnitz.de
Internet: www.cue-chemnitz.de

Project Objective: The main objective of the project was the elaboration of detailed design for the remediation of the contaminated site „Neue Sorge“ with the following tasks:

- refilling (phase 1 of remediation plan) and
- Sealing/covering of contaminated site „Neue Sorge“ as well as rehabilitation in the nature and landscape (phase 2 of remediation plan).

Location: Rositz

Client: LEG Thuringia
mbH

Beneficiary: LEG Thuringia
mbH

Year: 2007-2008

Initial Situation:



The contaminated site „Neue Sorge“ is located in the former opencast lignite mining, whereby the centre of the contaminated site is identical with the former opencast mining hole. In the area of the exploration mine of the former opencast lignite mining the fluid and pasty waste substances from the tar treatment were depositing during the last decades. The polluted machinery equipment, construction waste, scrap, ash and other operation residues were also depositing there.

The contaminated site „Neue Sorge“ is a part of one remediation area „Former Tar Treatment Plant Rositz“. The depositing waste material was extracted from the contaminated site „Neue Sorge“ and disposed of. Thereby a mining hole was formed on the site. Then the mining hole was filled and the area of the contaminated was rehabilitated into the environment.

Project Rositz 20203 – Remediation „Neue Sorge“

- Phase 1: Refilling
- Phase 2: Sealing/Covering
- Rehabilitation in the nature and landscape

C&E · Consulting und
Engineering GmbH

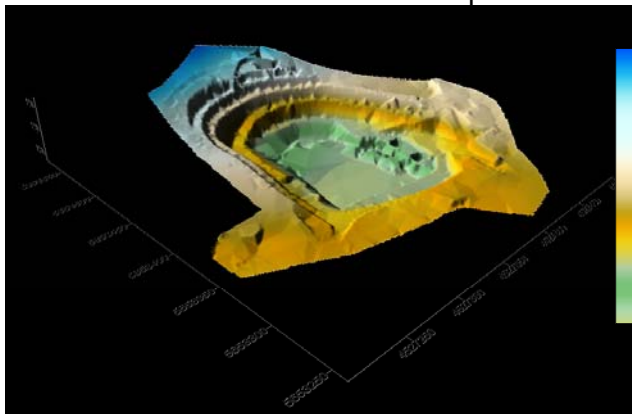


D-09117 Chemnitz • Jagdschänkenstraße 52
Tel.: +49 (0) 371 881 4228 • Fax: +49 (0) 371 881 4311
E-mail: info@cue-chemnitz.de
Internet: www.cue-chemnitz.de

Services provided:

- Cost calculation of the remediation options
- Project management in connection with the examination of the ability of interventions for licensing of design measures
- Detailed design
- Preparation of tender documents
- Development of Quality Assurance Programme
- Co/operation with the assignment

During the redevelopment planning it was to be considered that work related loads for the population are to be minimized as far as possible



Contaminated site „Neue Sorge“ in the original status

The planned overall measure consisted of the following main components:

1. Refilling of slope areas and lining of the filling area of the mining hole „Neue Sorge“ with a sealing of slopes
2. Refilling of mining hole in layers with a material from their origin location „Neue Sorge“ and plant grounds of the former tar treatment plant Rositz
3. Construction of packing with a defined load capacity using the soil-improving measures (stabilisation of refilling material with additives)
4. External disposal of material not appropriate for refilling
5. Construction of a surface cover at the shaped part of packing with a direct connection to the slope sealing
6. Maintenance of the leachate collection system inside the packing
7. Construction of drainage system for the safe collection and discharge of the remaining surface water including the pipeline to Erlenbach
8. Described implementation of the greening concept